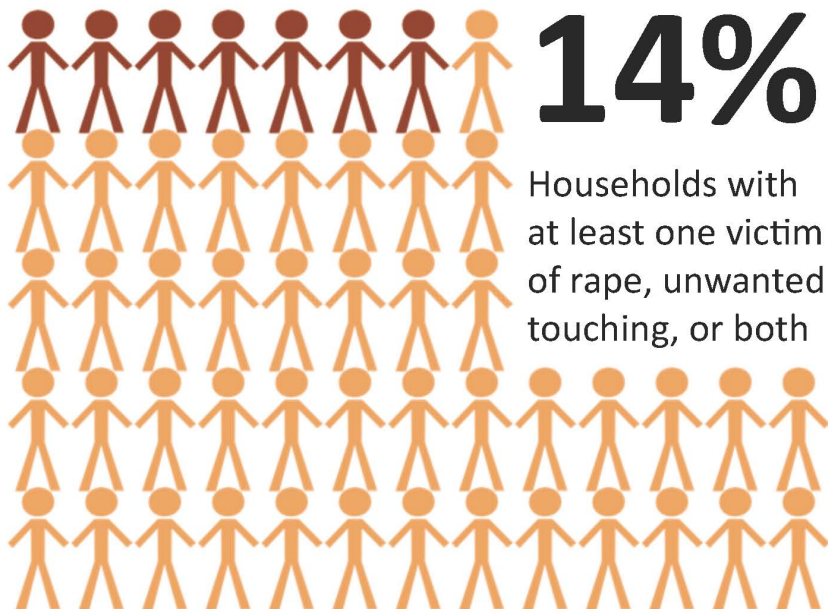
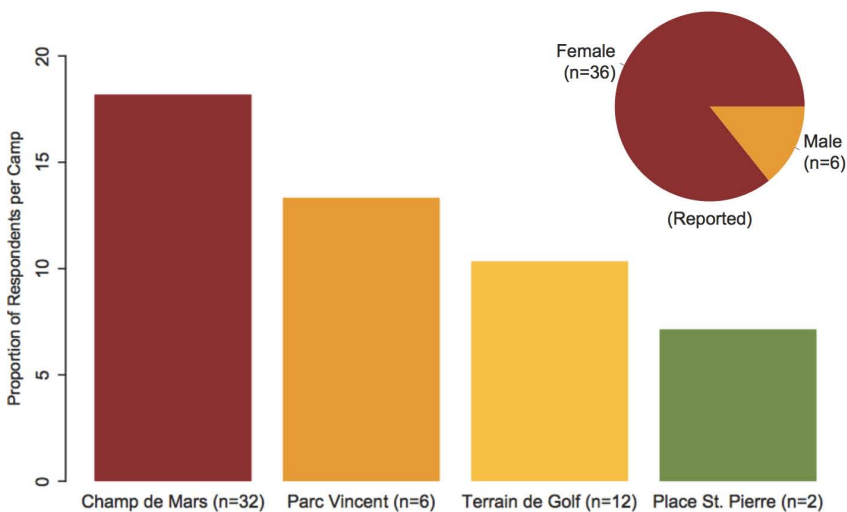


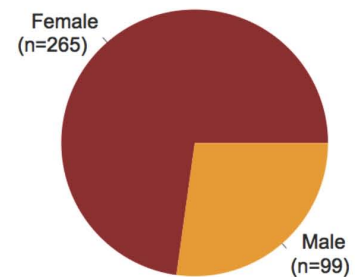
Methods In January 2011, the CHR&GJ conducted a survey in four IDP camps in and near Port-au-Prince, Haiti. Four very different camps were chosen to ensure a full understanding of the situation facing camp residents: Terrain de Golf, Champs de Mars, Parc Jean Marie Vincent, and Place St. Pierre. CHR&GJ interviewed people from 365 households, asking about basic human rights related to water, food, and sexual violence. CHR&GJ selected households by counting tents: interviewers conducted the survey then skipped a specific number of tents in each camp. While the results do not represent the entire camp population, the results do suggest the scope of human rights violations that confront many earthquake victims within IDP camps. The data may also provide key insights into the linkages between access to basic resources and vulnerability to sexual violence. The CHR&GJ will publish the complete results as well as policy recommendations in an upcoming report.

Sexual Violence Victims

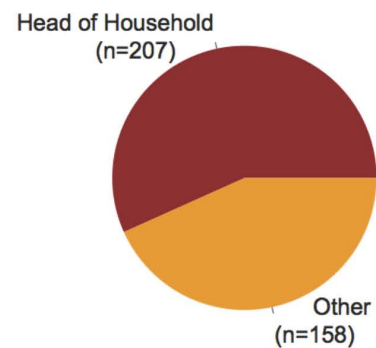


All Respondents

Gender



Role



Camp

